



Global SATCOM Tracking System

High Performance GPS Tracking

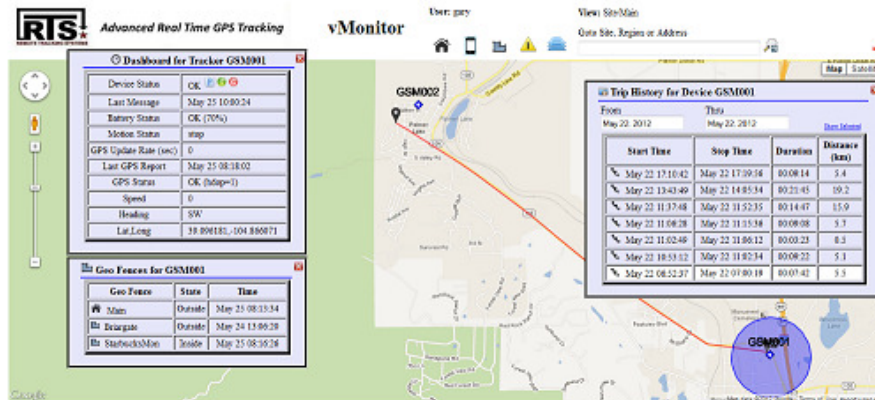
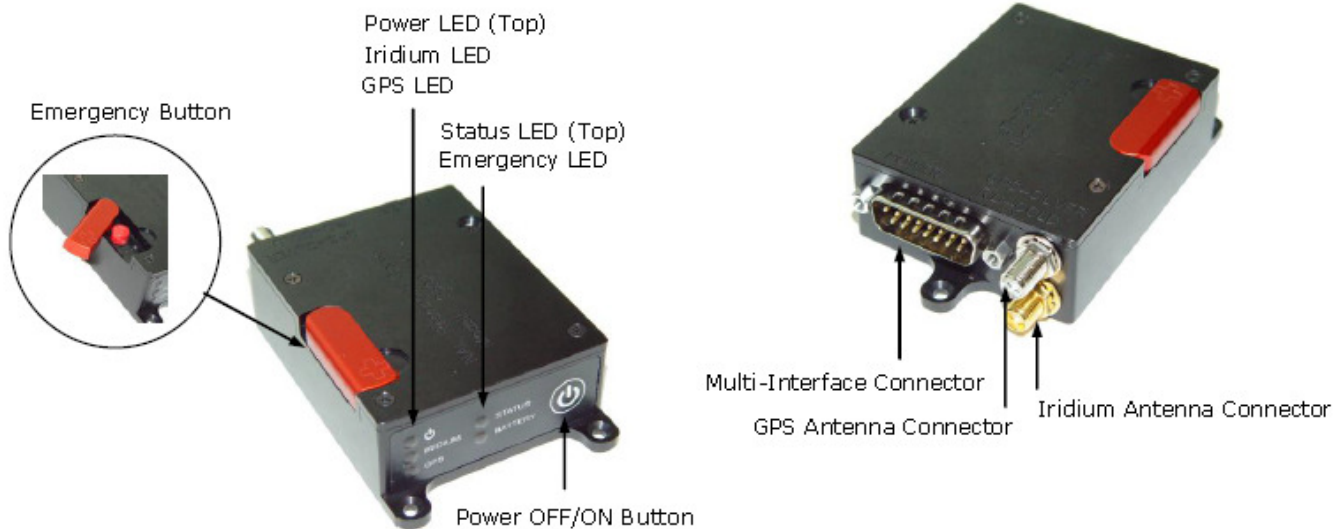
SATCOM Series

DESCRIPTION

The RTS SATCOM Series is a high performance tracking system using Iridium satellites to communicate the position of people, vehicles and other remote assets. The technology is most suitable for tracking units located in remote area where global cellular wireless service is not available.

The SATCOM series can simultaneously track 1000s of assets, each transmitting ID, GPS position, heading, and speed.

Remote tracking units, equipped with GPS receivers, report their position to the RTS Command and Control System (CCS). The CCS integrates the tracking data with the RTS web-based geo-spatial display system, vMonitor.



SPECIFICATIONS

Iridium Transceiver

Frequency: 1616 – 1626 MHz

Mechanical

Dimensions: 2.7" x 2.17" x 0.94"

Weight: 136 grams

Environmental

Operating Temperature: -40C to +85C

Operating Humidity: <75% RH

Electrical

Input Voltage: 6.5v to 32v

Avg Current (Report): 200mA

GPS Receiver

Receiver Type: NEO-6Q, 50 Channels

Accuracy: 2.5m CEP

Cold Start: 28s (new almanac data not required)

Hot Start: (Open Sky): 1s

Interfaces

TTL Outputs: 3

TTL Inputs: 3

RS-232 Ports: 1

Panic Button: 1 Remote and 1 Panel Button

Certifications

FCC

CE

Industry Canada

ORDERING INFORMATION

Product	Part #	Description	Notes
Remote Field Tracking Units	SAT- VTU	Vehicle Tracking Unit	
vGateway Server	RTS-VGW	Middleware hosted on Dedicated Linux Server with full database.	(1)
vMonitor Software	RTS-VMON	Geo-spatial graphing and display software	

NOTES:

(1) Can be implemented on virtual server through VMWare. Contact factory for details.